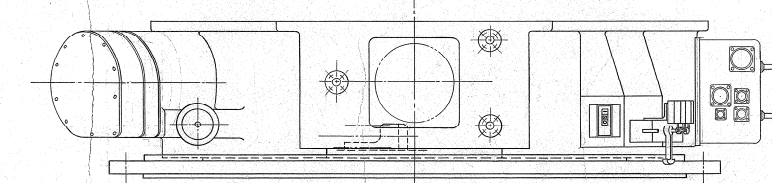


2131.002-E1-1
2131.002-E1-2
2131.002-E1-3
2131.002-E1-4
2131.002-E1-5
2131.002-E1-6
2131.002-E1-7
2131.002-E1-8
2131.002-E1-9
2131.002-E1-10
2131.002-E1-11
2131.002-E1-12
2131.002-E1-13
2131.002-E1-14
2131.002-E1-15
2131.002-E1-16
2131.002-E1-17
2131.002-E1-18
2131.002-E1-19
2131.002-E1-20
2131.002-E1-21
2131.002-E1-22
2131.002-E1-23
2131.002-E1-24
2131.002-E1-25
2131.002-E1-26
2131.002-E1-27
2131.002-E1-28
2131.002-E1-29
2131.002-E1-30
2131.002-E1-31
2131.002-E1-32
2131.002-E1-33
2131.002-E1-34
2131.002-E1-35
2131.002-E1-36
2131.002-E1-37
2131.002-E1-38
2131.002-E1-39
2131.002-E1-40
2131.002-E1-41
2131.002-E1-42
2131.002-E1-43
2131.002-E1-44
2131.002-E1-45
2131.002-E1-46
2131.002-E1-47
2131.002-E1-48
2131.002-E1-49
2131.002-E1-50

CLAMP
PRIMARY MIRROR CELL
TOTAL ROTATION 362°
FINE DRIVE 4" MAXIMUM



PROJECT DRAWINGS:
2131.002 - E1 THRU E8 ; E10 THRU E27
2131.002 - E40, E41, E42, E44, E53, E58
2131.002 - E50 THRU E63, E65, E66
2131.002 - D1, D2, & D5 THRU D25, D28
2131.002 - C1 THRU C22
2131.002 - B1 THRU B42
2131.002 - A1 THRU A16

NEW SOURCE ASST. DRAWN FOR OLD SYSTEM USE 2131.002-E12 (YHRR)

2139 U1-E REMOVED FOR CLARITY
2131.002-E39 & E53 OMITTED FOR CLARITY
ROTATION INDICATOR SWITCH ASBY 2131.002-E58 SHOWN IN PLACE ON 2131.002-E1, SHG & ON 2130.202.0001
2132 E1 OMITTED FOR CLARITY

E1-1 CASSEGRAIN INSTRUMENT ROTATOR ONE REQUIRED

1 AT FIRST ASSEMBLY OF THIS INSTRUMENT WITH TELESCOPE IN POSITION SHOWN, DRILL & TAP THRU HOLE AT LOCATION (X) INTO PART NO. 2130.261-E-003 TO PROVIDE A POOL PROOF FLAT OF 1/16".

2 FOR 84" INSTRUMENT ADAPTOR PLATE SEE DWG. NO. 2131.002-E11

3 FOR ASSEMBLY SEE 2130.202.0001

ITEM	QTY	MATERIAL	DESCRIPTION	WEIGHT
N	1	3030 STAINLESS	3030 STAINLESS	1.00
M	1	3030 STAINLESS	3030 STAINLESS	1.00
L	1	3030 STAINLESS	3030 STAINLESS	1.00
K	1	3030 STAINLESS	3030 STAINLESS	1.00
J	1	3030 STAINLESS	3030 STAINLESS	1.00
I	1	3030 STAINLESS	3030 STAINLESS	1.00
H	1	3030 STAINLESS	3030 STAINLESS	1.00
G	1	3030 STAINLESS	3030 STAINLESS	1.00
F	1	3030 STAINLESS	3030 STAINLESS	1.00
E	1	3030 STAINLESS	3030 STAINLESS	1.00
D	1	3030 STAINLESS	3030 STAINLESS	1.00
C	1	3030 STAINLESS	3030 STAINLESS	1.00
B	1	3030 STAINLESS	3030 STAINLESS	1.00
A	1	3030 STAINLESS	3030 STAINLESS	1.00

KITT PEAK NATIONAL OBSERVATORY

ASSOCIATION OF UNIVERSITIES FOR RESEARCH IN ASTRONOMY, INC.

NATIONAL SCIENCE FOUNDATION

150" TELESCOPE

CASSEGRAIN INST. ROTATOR

2131.002-E 1